



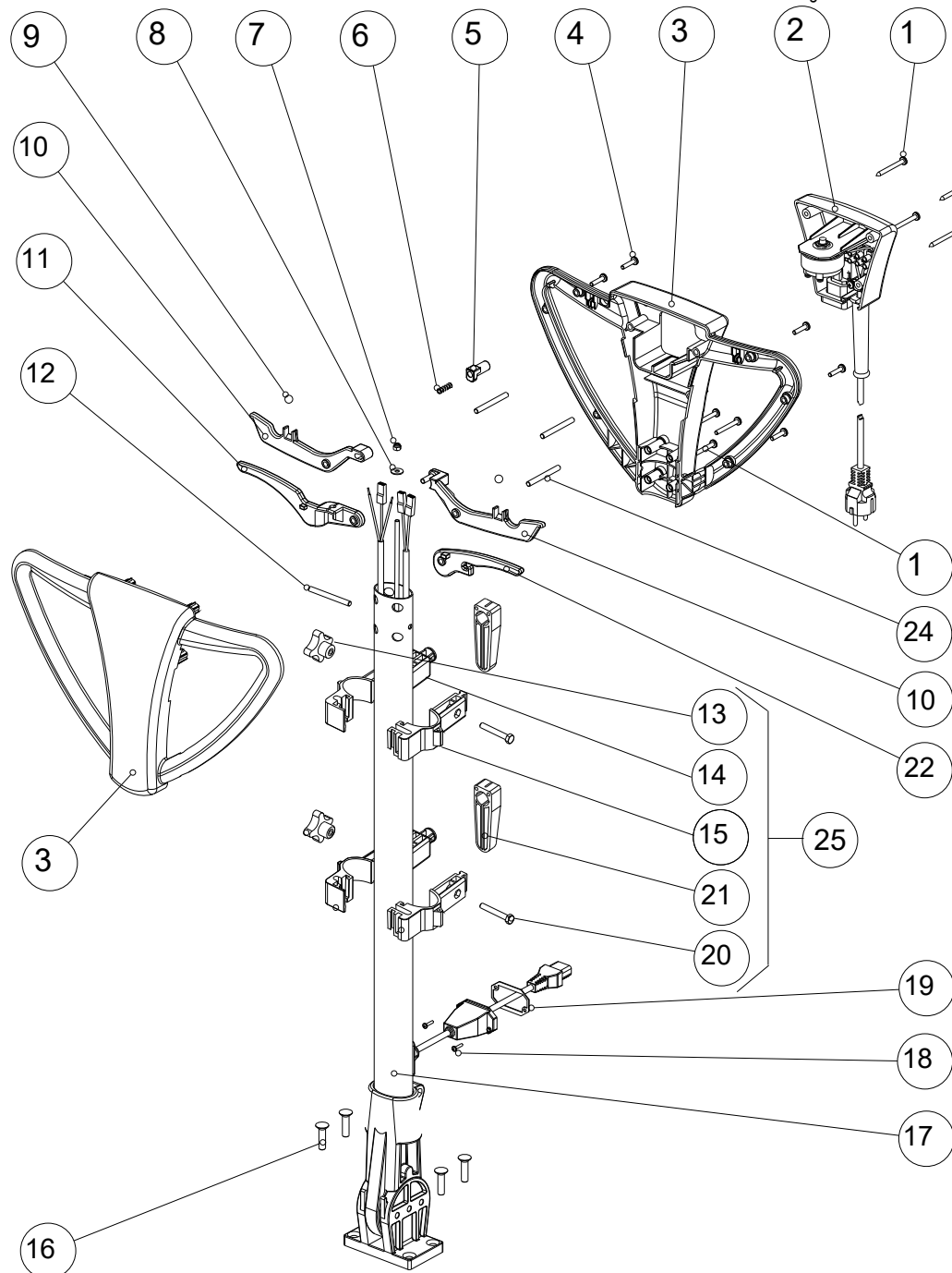
00-185EL-GH

**SB 143 L13**

SPARE PARTS

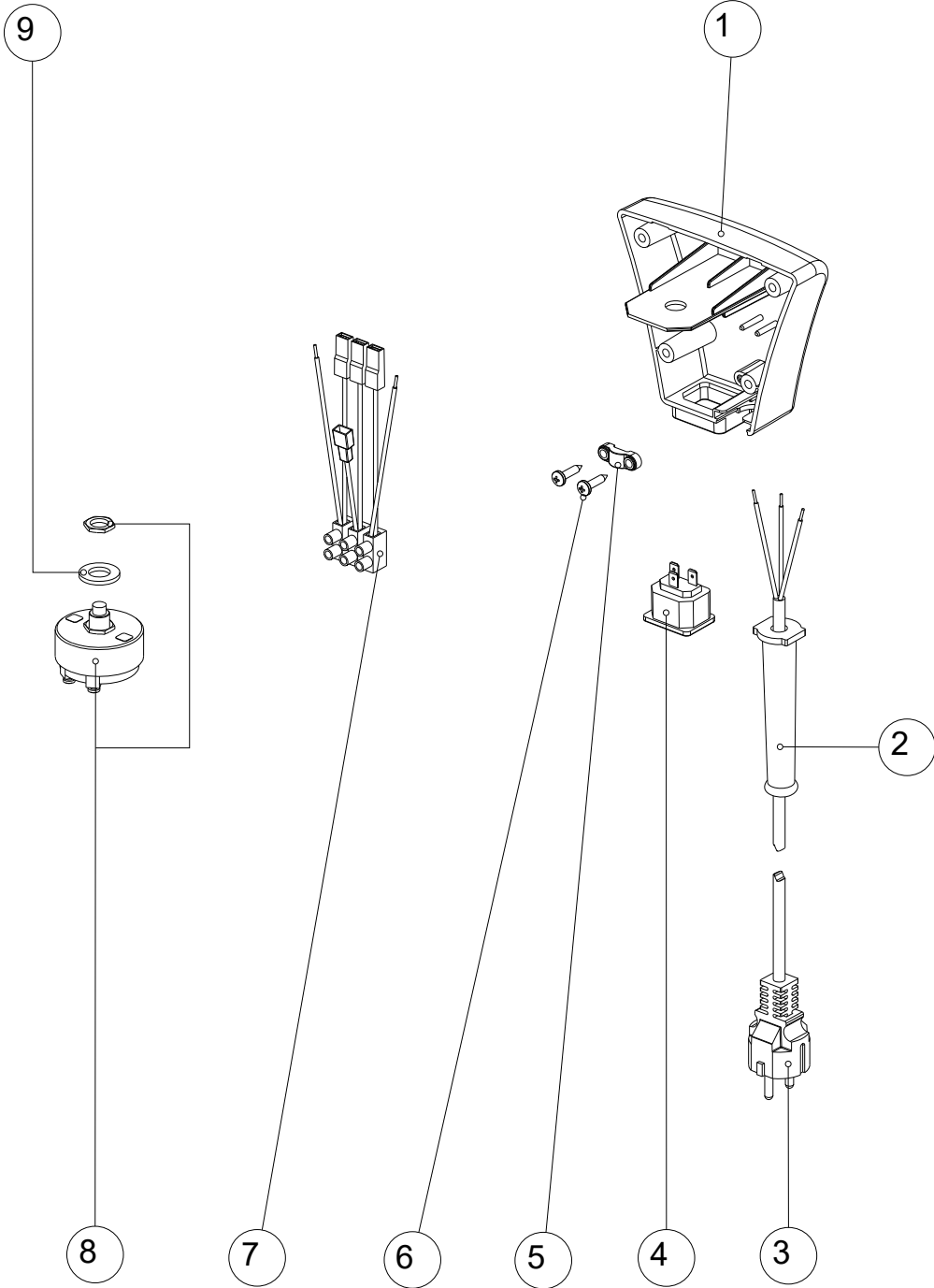
Index

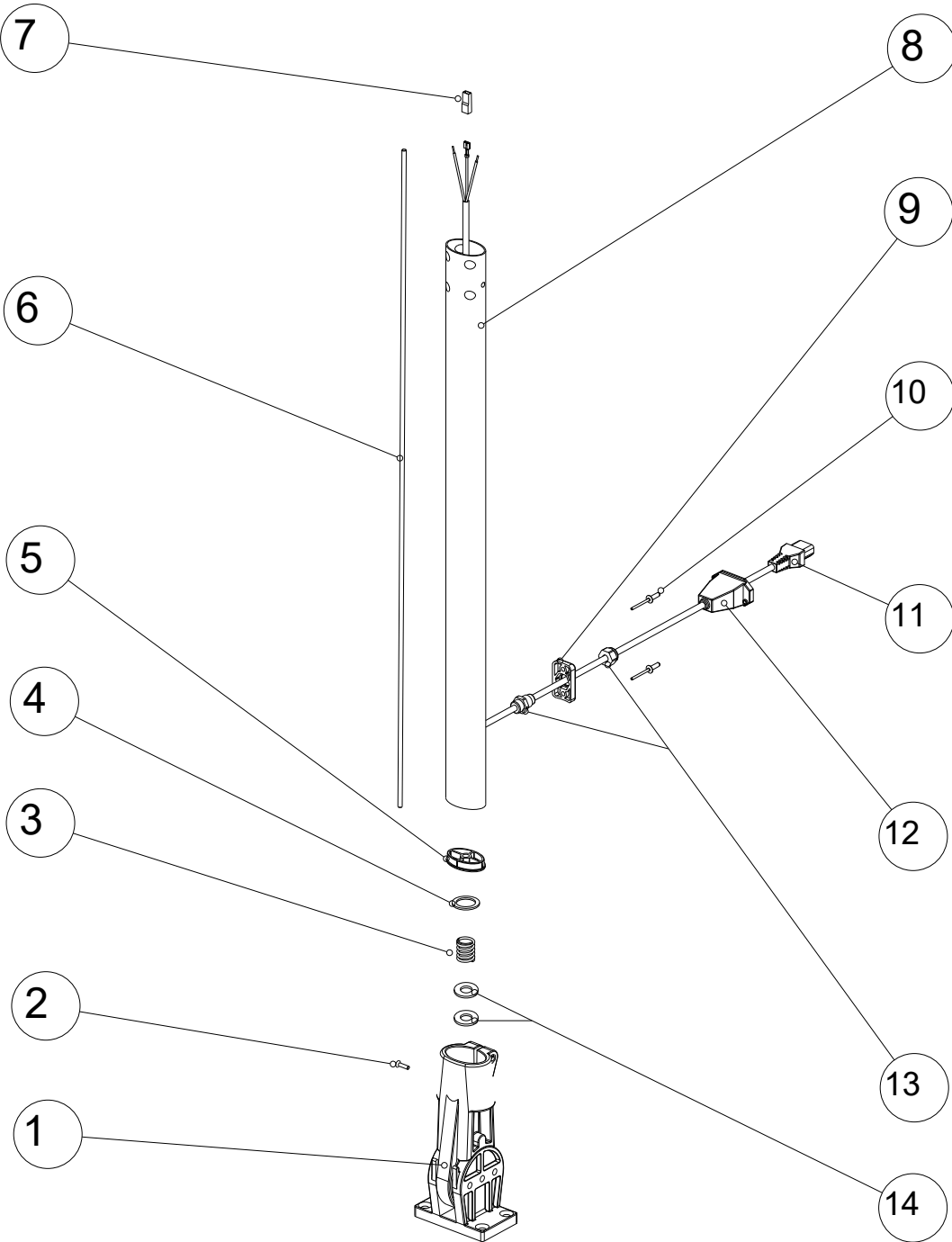
Table	Code	Page
Complete Handle SB143 EL		593
Control Box Group C143 EL		594
Stem + Joint Group C143 EL		595
Complete joint C143		596
Body machine SB 143 L13		597
Stator group 200x127 H55 230V 50HZ		598
Complete gear unit 154 RPM-PUMP		599
Base fusion assy SB 143 EL		600



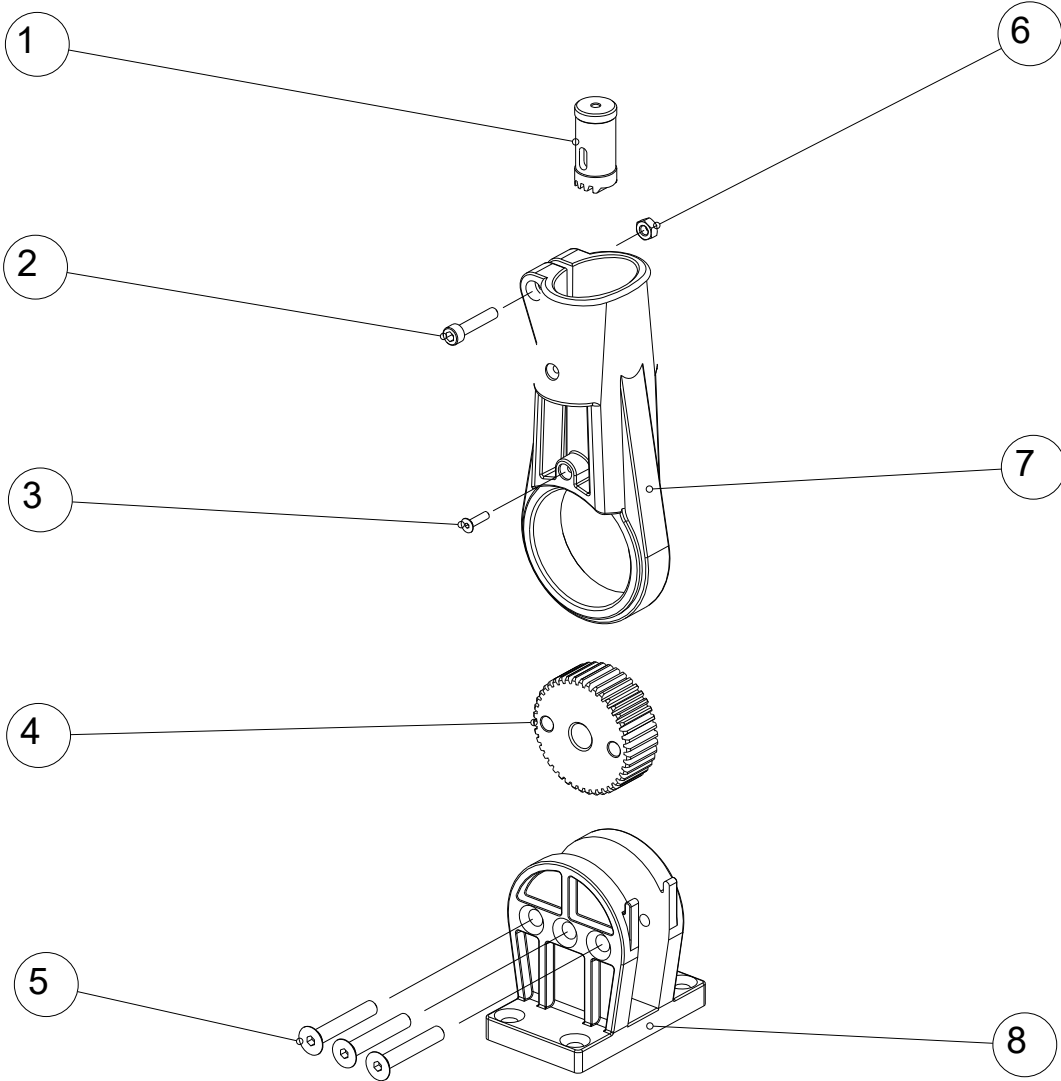
Item	Code	Description	Note	Q.ty
1	2508589	SCREW, PAN H. S. TAP. 5X50 CP ZB		8
2	37200P-05	CONTROLS CASING GROUP		1
3	35-425-55	PAIR OF SHELLS HANDLE C 143 GREY WD/YEL (RUBBERED)		1
4	2508591	SCREW, PAN H. S. TAP. 5X22		8
5	35-431	SAFETY BUTTON C 143		1
6	34259A	SPRING		1
7	200-640-015	NUT SIC.M5 INOX A2		1
8	2509012	WASHER D.5.3X15X1.2 A2 DIN9021		1
9	14-032	SECURITY SPHERE		2
10	35-430	SWITCH LEVER GROUP BLACK C143		1
11	35-426	HANDLE		1
12	31-010	PLUG D.6X63 HANDLE SHAFTC 143		1
13	2506314	KNOB CROSS-SHAPED D.40 M6 PASSING		2
14	31-060	SUPPORT CABLE RIGHT		2
15	31-070	SUPPORT CABLE LEFT		2
16	2508073	SCREW, SW TSPCEI M8X25 A2		4
17	37100P-05	HANDLE SHAFT GROUP C143		1
18	2508500	SCREW, PAN H. S. TAP. 3X20 SP ZB		2
19	16-322	SOCKET COVER GASKET C43 PLUS		1
20	2508429	SCREW, HEX.HEAD M6X45m A2 DIN933		2
21	31-080	ROTATING COMPONENT		2
22	35-428	TANK HANDLE		1
24	33-903	PIN D.6X58 C 143		3
25	37-342	KIT ERGOLINE TAK MOUNTING		1

Item	Code	Description	Note	Q.ty
1	32-032-05	CONTROLS BOX		1
2	12-118	CABLE PASS		1
3	32-112	POWER CORD 3X1,5 C 143		1
4	12-033	AUXILIARY SNAP SOCKET C43		1
5	12-109	BLACK SMALL STAPLE		1
6	13-924	SCREW, 4,5X20 CP TC POZIDRIVE GALVANIZED		2
7	31-050	TERMINAL		1
8	12-108	SWITCH C43		1
9	200-301-021	WASHER 13X25X2,5		1

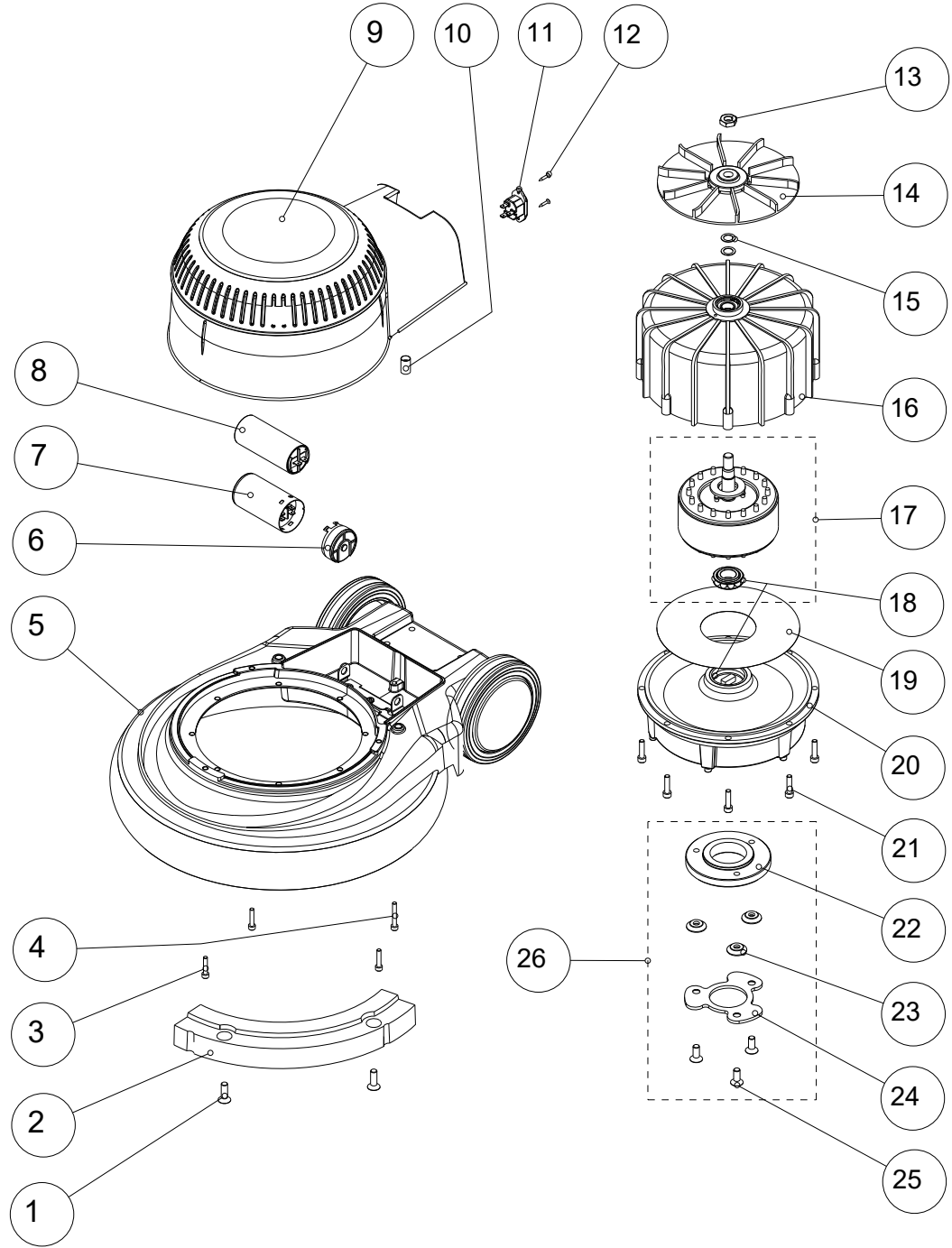




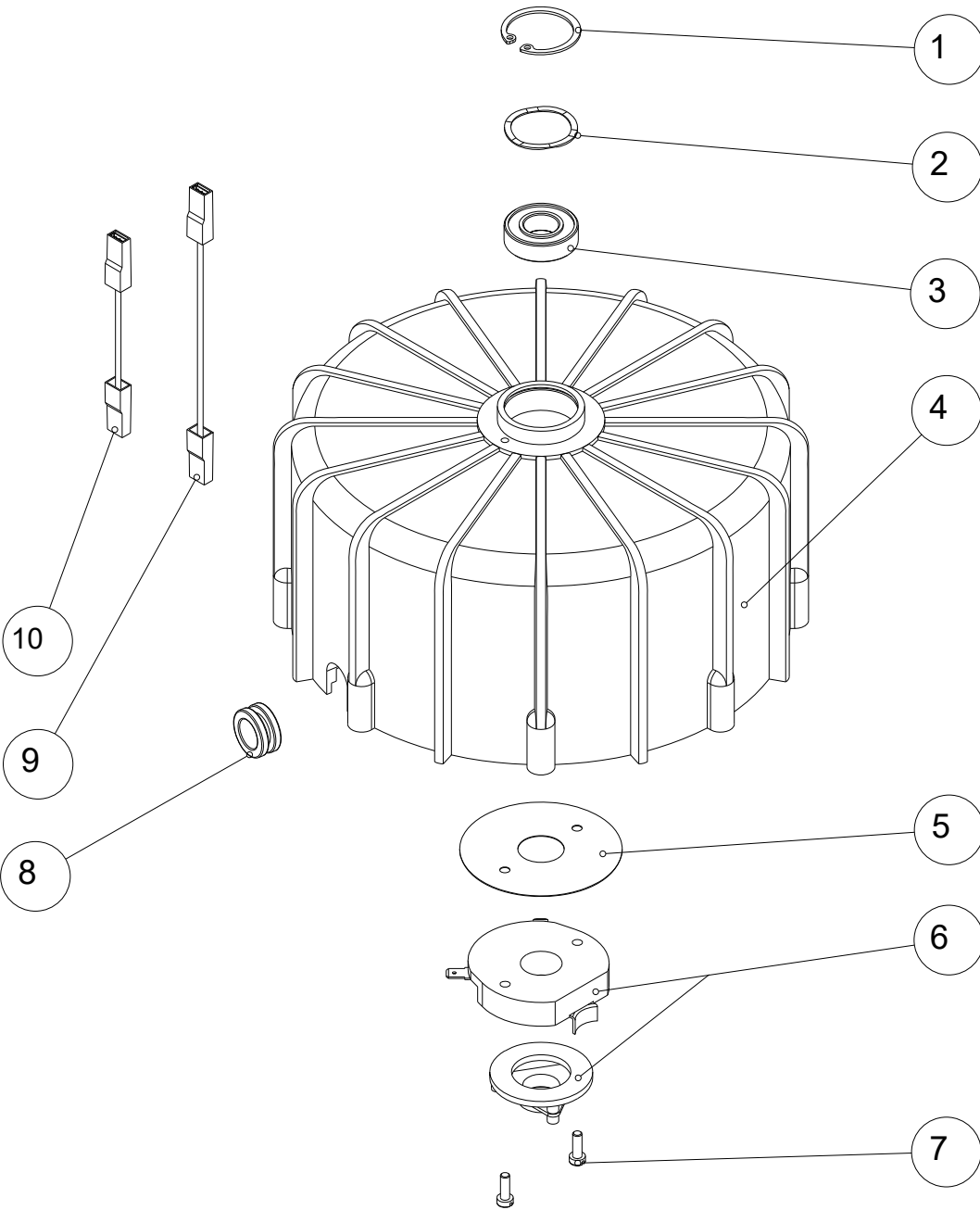
Item	Code	Description	Note	Q.ty
1	37-440	COMPLETE ARTICULATION		1
2	13-012	SCREW, HEX. S.C.H.C. M4X16 10.9 ZB UNI 5933		1
3	14-255	SELECTOR SPRING		1
4	31-030	CAP MOUSSE		1
5	31-020	SHAFT CAP		1
6	34-257	RELEASE ROD		1
7	2506440	FAST-ON COVER		1
8	34258P	HANDLE SHAFT		1
9	32103B	PLATE		1
10	2508833	RIVET 4,8 X 15		2
11	32-101	SMALL CABLE WITH PLUG 3X1.5 C 143 HP		1
12	GH15-433	SOCKET COVER C43 PLUS		1
13	019-527-038	CABLE HOLDER		1
14	2509060	WASHER D10.5X21		2



Item	Code	Description	Note	Q.ty
1	14-254	SELECTOR PIUNGER		1
2	13-361	SCREW, HEX.S.H.C. M6X30 8.8 ZB UNI 5931		1
3	13-012	SCREW, HEX. S.C.H.C. M4X16 10.9 ZB UNI 5933		1
4	14-252	SELECTOR GEAR		1
5	13914P	SCREW, HEX. S.C.H.C. M8X50 10.9 ZB UNI 5933		3
6	2508710	NUT M6		1
7	34255F	CONNECTING ROD+FORK FUSION C143		1
8	14242P	FUSION C43		1

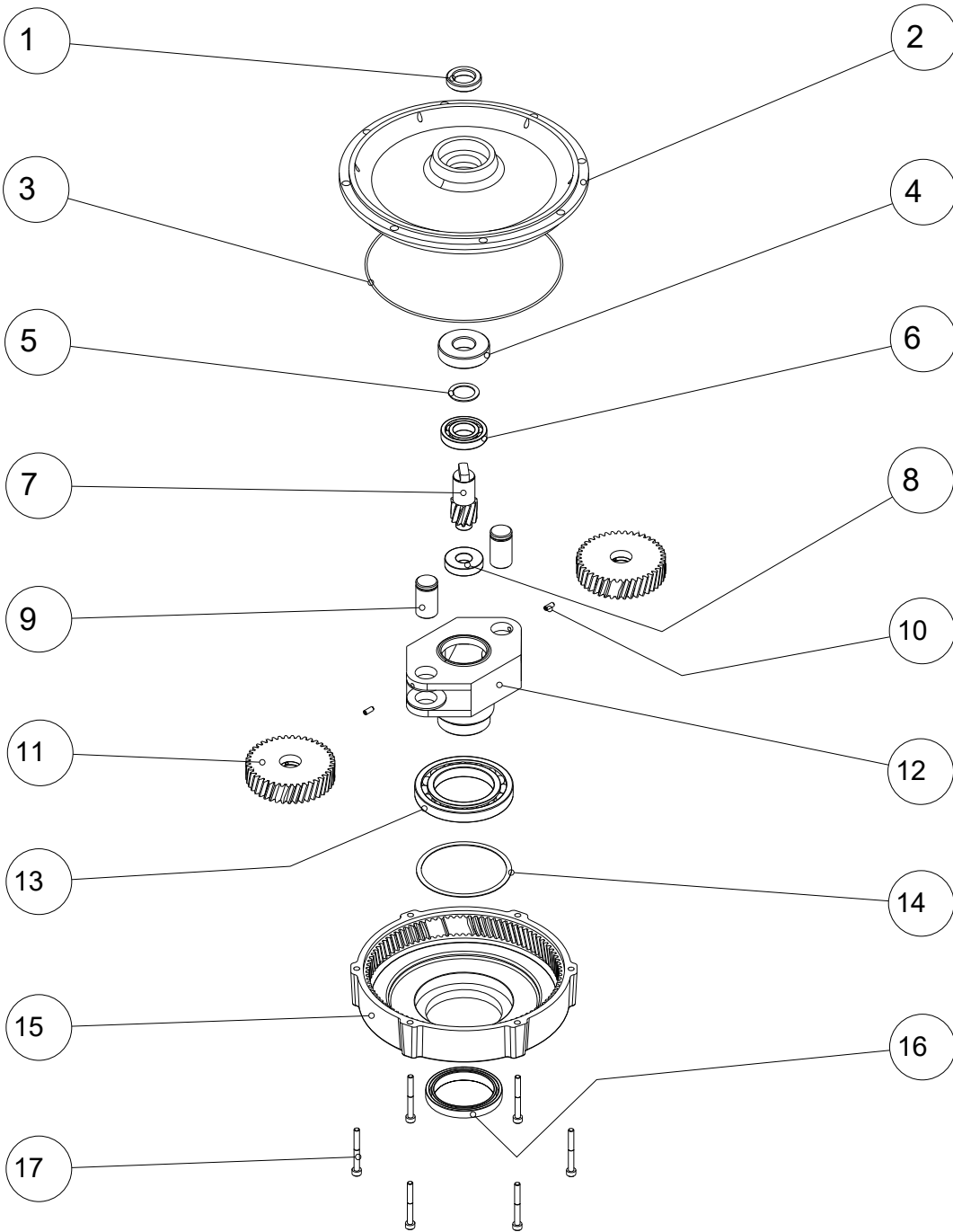


Item	Code	Description	Note	Q.ty
1	2508073	SCREW, SW TSPCEI M8X25 A2		2
2	14119P	COUNTER WEIGHT		1
3	KA13-801	SCREW, HEX.S.H.C. M5X25		3
4	KA13908P	SCREW, HEX.S.H.C. M5X35 A2 DIN912		1
5	GH301185	BASE FUSION GROUP CMP.SB 143 EL GH		1
6	12121A	CONDENSOR COVER		1
7	12-124	START CAPACITOR 140 µF 250V		1
8	12123A	CAPACITOR 25 µF		1
9	GH35226P	COMPLETE CAP SB143 YELL/GREY		1
10	13-998	SPACER		1
11	12-106	INLET SOCKET		1
12	13926P	SCREW, C.R.C.H.T. 3X16 CP ZB DIN7982		2
13	13-939	NUT M12X1		1
14	14-121	FAN		1
15	13-008	FLAT WASHER 12X18X0,5		2
16	10-620	STATOR GROUP 200X127 H55 230V 50HZ		1
17	10-704	BALANCED ROTOR D.127 H55+CUSCIN.E20 ZKL		1
18	11-029	BEARING		1
19	11-030	INSULATING WASHER C43 70X180X0.2		1
20	14-127	GEAR BOX ASSEMBLY		1
21	KA13-983	SCREW, HEX.S.H.C. M6X35 INOX A2 DIN912		8
22	14-120	HUB D.46 C43 M8		1
23	15-121	RIP PROTECTION 25X5.25		3
24	14-133	FLANGE HOLDER C43 GALV.		1
25	23.0015.00	SCREW, HEX.S.C.H.C. M 8X20 A2 DIN 7991		3
26	17-430	BEARING HUB CMP.C43		1

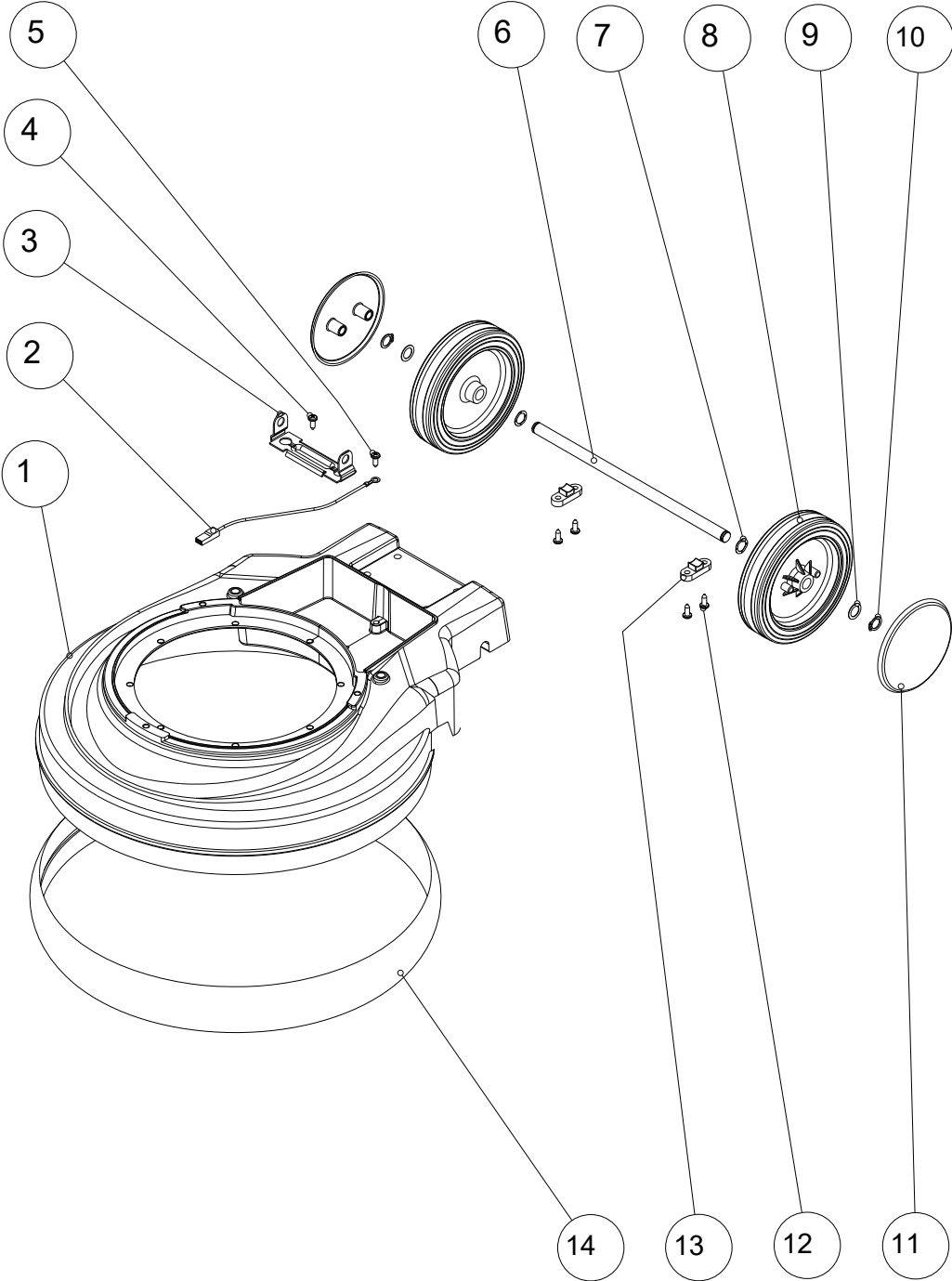


Item	Code	Description	Note	Q.ty
1	13-999	RAW SEEGER 32I		1
2	13-941	COMPENSATION RING 31,7X26,5X0,4 C43		1
3	11-027	BEARING 6002 ZZ EMQ (15X32X9)		1
4	11-433	STATOR + FRAME 200X127H55 230V 50HZ		1
5	15-138	INSULATION PLATE		1
6	12-378	CENTRIFUGAL BREAKER C43		1
7	13-370	SCREW, S.C.H. M4X12 4.8 ZB UNI 6107		2
8	13-997	STATOR CABLE PASS C43		1
9	13-994	RED WIRE SET 1.5 SECTION L.230 FF6,3-FF6,3		1
10	13-995	YELLOW WIRE SET 1.5 SECTION L.100 FF6,3-FF6,3		1

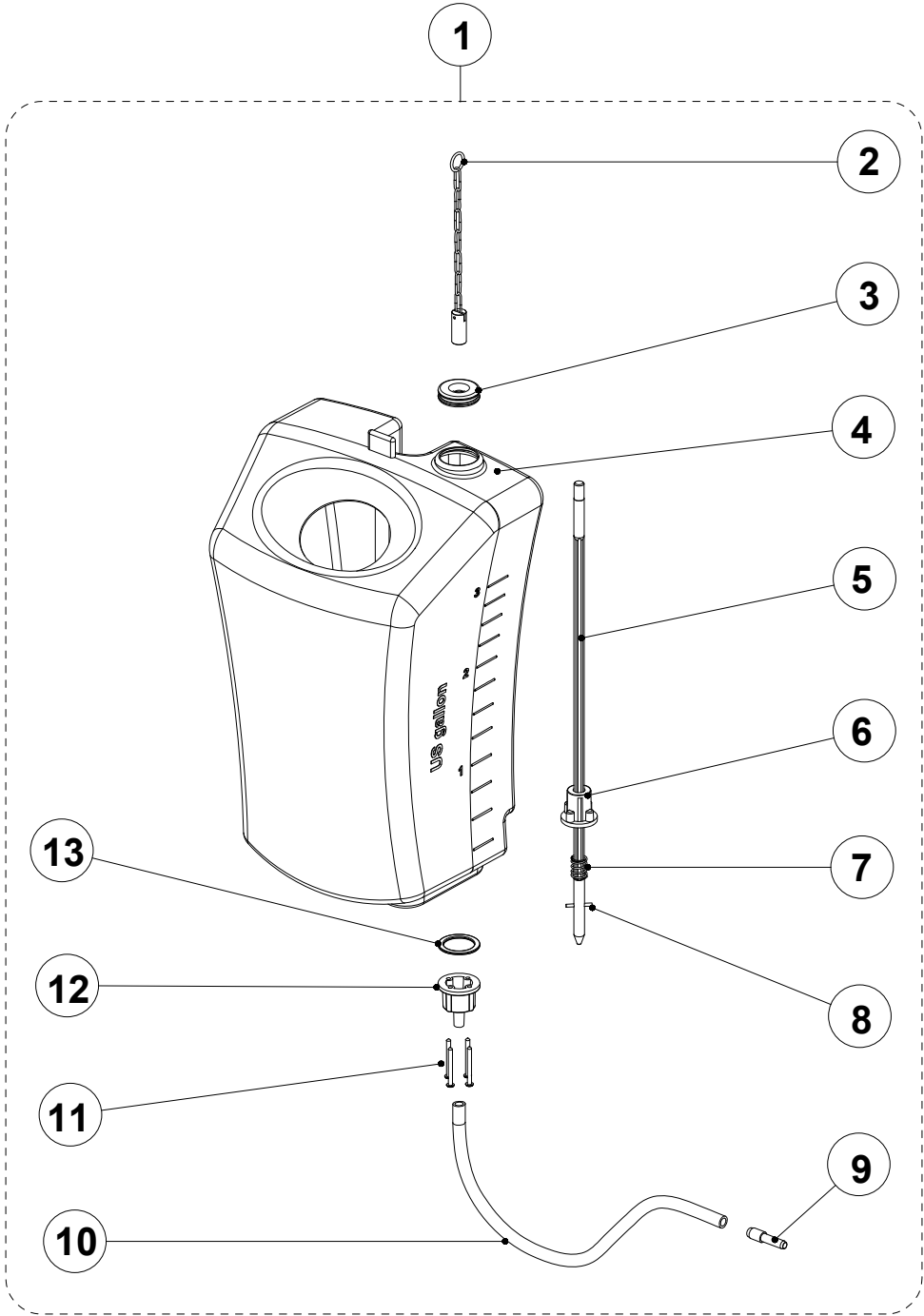




Item	Code	Description	Note	Q.ty
1	16-105	OIL SEAL		1
2	14-175	REDUCTON SHIELD HIGH CR002/S		1
3	16-100	O-RING M181X2		1
4	11-029	BEARING		1
5	13-065	FLAT WASHER		1
6	19-305	BEARING		1
7	14-187	LAY SHAFT		1
8	19-300	BEARING		1
9	14-180	GEAR SHAFT		2
10	13-010	GRUB SCREW M4X10		2
11	15-230	GEAR BOX ASSEMBLY		2
12	14-184	REDUCTION CAGE		1
13	19-310	BEARING		1
14	13-002	CORRUGATED WASHER		1
15	14-190	PLANETARY BOX		1
16	16-110	OIL SEAL		1
17	KA13-803	SCREW, HEX.S.H.C. M5X45 INOX A2 DIN912		6



Item	Code	Description	Note	Q.ty
1	14118P	BASE FUSION GREY/SILVER C43		1
2	13-996	WIRE SET YEL/GRE SECT. 1,5L.190 FF6,3-OCC.5		1
3	14-117	CONDENSER ROD 45.5X84mm		1
4	10-972	SCREW C15 SW 5X10 TS PH ZB DIN 7500		1
5	13-952	CROSSHEAD SCREW 5X6		1
6	14120P	WHEELS AXLE C43/505		1
7	13-936	CORRUGATED WASHER		2
8	39251P	WHEEL		2
9	27.0008.00	TRUST WASHER		2
10	KA13-937	SEEGER		2
11	GH19252P	WHEEL COVER C43 PLUS		2
12	2508561	SCREW, PAN H. S. TAP. 4,8X13 CP INOX A2 DIN7981-C		4
13	15-135	AXLE RETAINER		2
14	GH16-375	BUMPER YELLOW		1



Item	Code	Description	Note	Q.ty
1	00-330	TANK ERGOLINE 12 L		1
2	14-821	TANK CHAIN		1
3	31-090	TOP CAP FOR SINGLE-DISC MACHINE TANK C 143		1
4	35125A	TANK BODY FOR MONODISC C143 HOLED		1
5	15-128	VALVE ROD		1
6	15-127	UPPER SEMIVALVE FOR SING.BRUSH TANK		1
7	14-575	SPRING		1
8	14-829	CYLINDRIC SOCKET 3X25,5		1
9	14-830	SINGLE BRUSH TUBE CLUTCH		1
10	15-129	TUBE		1
11	2508534	SCREW, PAN H. S. TAP. 4X40 INOX A2		1
12	15-126	LOWER SEMIVALVE FOR SING.BRUSH TANK		1
13	16-325	GASKET		1

DEALER

## Ghibli & Wirbel S.p.A.

Via Circonvallazione, 5 - 27020 Dorno PV - Italia

P. +39 0382 848811 - F. +39 0382 84668 - M. [info@ghibliwirbel.com](mailto:info@ghibliwirbel.com)

[www.ghibliwirbel.com](http://www.ghibliwirbel.com)

100% MADE IN ITALY

